

Vinci®

EXPRESS COLD BREW™/MC



INSTRUCTIONS

www.vincihousewares.com | 888.735.3621 | support@vincihousewares.com

IMPORTANT SAFEGUARDS

When using electrical appliances, basic safety precautions should always be taken to reduce the risk of fire, electric shock and/or injury to persons, including the following:

- Read all instructions before first use.
- Remove all bags and packaging from appliance before use.
- Make sure the appliance is cleaned thoroughly before using.
- Do not use the appliance for other than intended use. For household use only. Do not use outdoors.
- Close supervision is necessary when any appliance is used by or near children.
- Unplug from outlet when not in use, before putting on or taking off parts, and before cleaning.
- Avoid contacting moving parts.
- To protect against electrical shock, do not immerse cord, plug, or Control Lid in water or other liquid.
- Do not operate any appliance with a damaged cord or plug, or if the appliance malfunctions or has been damaged in any manner. If you think there may be an issue with your product, please contact customer support at 888-735-3621 or email support@vincihousewares.com.
- Do not let cord hang over the edge of table or counter, or touch hot surfaces.
- The use of extension cords is NOT recommended.
- Do not use outdoors.
- Do not place on or near a hot gas or electric burner, or in a heated oven.
- Never operate the Vinci Express Cold Brew with a damaged or cracked carafe, or a loose or damaged handle.
- This appliance is not intended for use by persons (including children) with reduced physical, sensory or mental capabilities, or lack of experience and knowledge unless they have been given supervision or instructions concerning the use of the appliance by a person responsible for their safety.
- The use of accessory attachments, not recommended by Vinci Housewares, may cause injuries and should not be used.
- Only use the included power cord with the Express Cold Brew.
- Always unplug your Vinci Express Cold Brew before disassembly, serving, or cleaning.
- Do not use abrasive cleaning agents to clean your Express Cold Brew.
- ARM Enterprises, Inc. shall not accept liability for damages caused by improper use of the appliance.

**Conforms to UL STD. 982,
Certified to CSA STD. C22.2 No.1335.1 & 1335.2.14**

**SAVE THESE INSTRUCTIONS
FOR HOUSEHOLD USE ONLY**

WARNING: RISK OF FIRE OR ELECTRICAL SHOCK

WARNING:

- To reduce the risk of fire or electrical shock, do not disassemble or attempt to repair the Control Lid.
- Repair should be done by authorized service personnel only.
- Do not immerse Control Lid in any liquid.
- The Vinci Express Cold Brew is intended for household use only.

SPECIAL CORD SET INSTRUCTIONS:

- A short power-supply cord is provided to reduce the risks resulting from becoming entangled in or tripping over a long cord.
- If an extension cord is used, the marked electrical rating of the extension cord must be at least as great as the electrical rating of the appliance, and the longer cord should be arranged so that it will not drape over the counter top or tabletop where it can be pulled on by children or tripped over.
- This appliance has a polarized plug (one blade is wider than the other). To reduce the risk of electric shock, this plug is intended to fit into the outlet one way.
- If the plug does not fit into the outlet, reverse the plug, and try to re-insert the plug into the outlet.
- Do not force the plug into the outlet.
- Do not attempt to modify the electrical plug in any way.
- If the plug still does not fit, please contact a qualified electrician.

OPERATING NOTICE: Do not overfill with water. The water indicator on the glass carafe has been designed to give optimal results. Overfilling the machine can cause damage to your brewer and/ or result in personal injury.

CAUTION: Do not store Express Cold Brew Carafe with the Control Lid in the refrigerator, . This can cause damage to your brewer. Always use the included Serving Lid with your carafe when placed or stored in the refrigerator.

**SAVE THESE INSTRUCTIONS
FOR HOUSEHOLD USE ONLY**



hello

TABLE OF CONTENTS

Important Safeguards.....	1
Warnings.....	2
Table of Contents	4
Introduction	5
Cold Brew 101	8
Removing the Cleaning Cup from the Carafe	9
Important Information Before First Use.....	10
Getting to Know your Express Cold Brew	11
How to use your Express Cold Brew	13
Care and Cleaning of the Filter Basket.....	17
Care and Cleaning of the Control Lid	19
Troubleshooting	21
Coffee Grind Guide	45
Notes.....	46

Vinci®

EXPRESS COLD BREW

Welcome to the Vinci Housewares family, we are happy you are here!

With the Vinci Express Cold Brew, delicious cold brew coffee is now only moments away. While traditional cold brew coffee brewing methods can take up to 18-24 hours, the Vinci Express Cold Brew now brews fully extracted, delicious cold brew in as little as 5 minutes - thanks to our proprietary Circle Flow Brewing Technology. The secret to our ultra-fast cold brew is in the water flow, our patented Circle Flow Brewing Technology allows for a continual flow of brewing water that completely, yet gently, extracts all the best flavors from ground coffee in just minutes.

While our Express Cold Brew is typically 100 times faster than traditional methods, it still retains all of the exceptional flavor attributes of the slower, conventional cold brew steeping method. By increasing the rate of extraction, yet never introducing heat, you always get an incredibly well-balanced brew that is full of flavor, yet noticeably smoother and with lower acidity.

With the Vinci Express Cold Brew, you control how strong you want your cold brew with the simple twist of a knob. From ready to drink to bold concentrate, the choice is yours!

To learn more about our other products and to sign up for our newsletter, receive news, recipes, and offers, visit us at www.vincihousewares.com.

www.vincihousewares.com | 888.735.3621 | support@vincihousewares.com



A glass of iced coffee with coffee being poured into it. The glass is filled with ice and coffee, and a stream of coffee is being poured into it from above. The glass is sitting on a wooden surface with a small mat underneath it.

Cold Brew 101

WHAT IS COLD BREW COFFEE?

Cold brewing is the process of steeping medium to coarse ground coffee in cool water temperatures for 12 to 24 hours. By not introducing heat to the brewing process, you are rewarded with an incredibly bold, favorable coffee, which is also noticeably smoother and lower in acidity when compared to warm brewed coffee.

Depending on how long a cold brew is steeped, the resulting coffee can be from mild to quite strong. Typically, a mild brew is ready to drink, and a stronger brew results in more of a concentrate and is meant to be served with milk or diluted with water. Making a batch of cold brew concentrate is an excellent way to extend the yield of the cold brew, giving you coffee for an entire week with one batch.

While most people enjoy cold brew as part of a chilled or iced coffee experience, it should be noted that heating cold brew retains its smoother flavors and lower acidity. Heating cold brew coffee is a great way to enjoy its enhanced taste while drinking hot coffee as well.

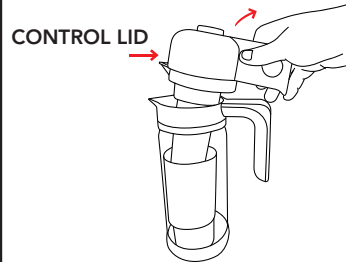
With the Vinci Express Cold Brew, you can now enjoy a delicious cold brew in about the same time it takes to brew a standard pot of brewed coffee. Aside from being fast, the Vinci Express Cold Brew will save you a ton of money over the cost of Cold Brew from your local market or coffee shop and is an easy, delicious way to enjoy the cold brew coffee you love at home.

REMOVING THE CLEANING CUP FROM THE CARAFE:

Cleaning Cup is stored inside the Carafe for shipping and needs to be removed before use.



How to Remove

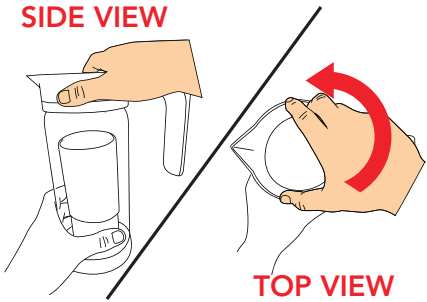


1. Lift the Control Lid, with the attached Filter Basket, out of the Carafe and place it onto a flat surface.

IMPORTANT:

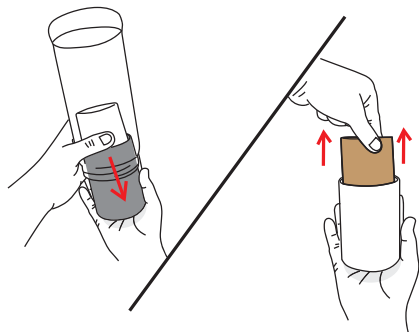
Read and remove all stickers and warning labels from the unit.

SIDE VIEW



TOP VIEW

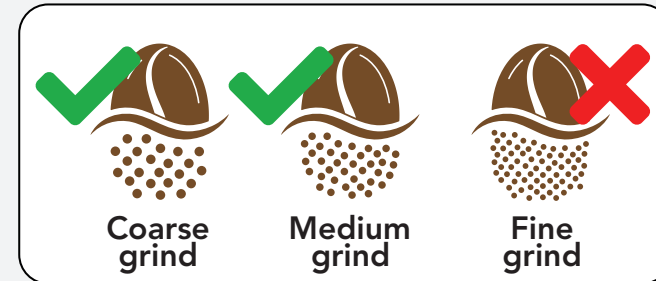
2. On a flat surface, use one hand to grip the base of the Carafe and the other to grip the top of the Jar Collar like images shown on the left. Detach the Jar Collar by gripping the collar and turning it counterclockwise.



3. After detaching the Jar Collar, remove the Cleaning Cup from the Carafe and discard the protective cardboard from the Cleaning Cup.

IMPORTANT INFORMATION BEFORE FIRST USE:

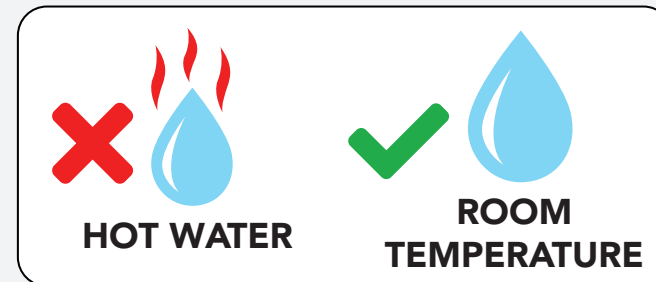
- Before first use, and after subsequent uses wash all parts with warm soapy water, EXCEPT for the Control Lid which should never be submerged in water (see Control Lid Cleaning instructions on page 19).
- Read and remove all warning labels, stickers, and packaging materials.
- Carefully read all the instructions.



NEVER Use Fine Ground Coffee

Fine grind coffee will clog the filter and void warranty

See Coffee Grind Guide on page 45



NEVER Use Hot Water

Using hot water will void warranty

GETTING TO KNOW YOUR EXPRESS COLD BREW

Before using your Express Cold Brew for the first time, familiarize yourself with the various parts of the machine and how it functions.

Before first use, and after subsequent uses wash all parts with warm soapy water, EXCEPT for the Control Lid which should never be submerged in water (see Control Lid Cleaning instructions on page 17). Carefully read all the instructions.



- A. Control Lid
- B. Water Pickup Tube
- C. Filter Basket Assembly
- C1. Filter Basket Top Cap
- C2. O-Ring Seal
- C3. Main Filter Basket
- C4. Filter Basket Bottom Cap
- D. Jar Collar with Handle
- E. Borosilicate Glass Carafe
- F. Non-Slip Silicone Base
- G. 2 Tablespoon Scoop
- H. Serving Lid
- I. Cleaning Cup
- J. Power cord
- K. Instruction Manual

CONTROL LID



Brew Button

Once the desired function is selected by the Control Knob, use the Brew button to start or stop the selected process. When Express Cold Brew is in standby mode, the Brew button is illuminated blue. When the Express Cold Brew is running, the Brew button is illuminated red. When there is no power or the current setting is Off, the Brew button is not illuminated.

Off

When Off is selected, there is no power to the Express Cold Brew and it will not operate.

Light - 5 Minute Brew Cycle

When Light is selected, the Express Cold Brew will run for 5 minutes. The results are typically a ready to drink brew that is delightful poured right out of the Carafe. This setting is typically equivalent to 16 hours of the traditional cold brew steeping method.

Medium - 10 Minute Brew Cycle

The Medium brew setting delivers a very favorable beverage that is perfect for those that like a little stronger brew and like cold brew served over ice. This setting is typically equivalent to 18 hours of the traditional cold brew steeping method.

Bold - 15 Minute Brew Cycle

Using a Bold cycle will make a brew that is strong enough to dilute with milk or other additives and still maintain the delicious coffee flavor that is signature to cold brew coffee. This setting is typically equivalent to 20 hours of the traditional cold brew steeping method.

Extra Bold - 25 Minute Brew Cycle

For those that want a very strong cold brew or those that wish to make a cold brew concentrate, the Extra Bold setting is for you. This setting is typically equivalent to 24 hours of the traditional cold brew steeping method.

Clean

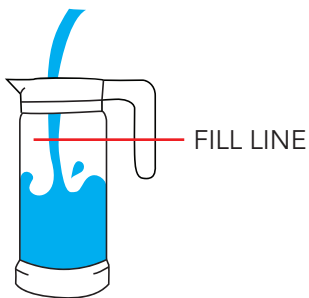
This is a special setting only used when you want to pull fresh water through the pump system to flush any possible remnants of prior brew cycles away. This is primarily used when switching between flavored and not flavored coffee or prior to storing the Express Cold Brew for extended periods of time.

HOW TO USE YOUR EXPRESS COLD BREW

IMPORTANT: Make sure that all surfaces are all clean of any unwanted minerals or coffee grounds before using. This will ensure that the brewer will provide the best cup of cold brewed coffee.



How To:
See it in Action!!



FILL LINE

1. Fill the Carafe with fresh, room temperature water, filtered water is best (or recommended). Never fill past the Fill Line.

NOTE: Always use room temperature water when brewing.

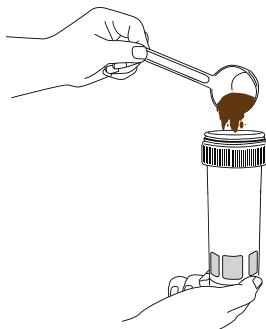
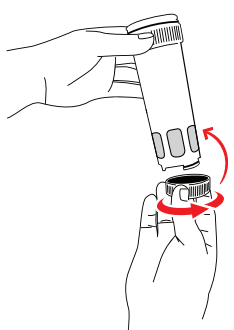
IMPORTANT:
NEVER USE HOT WATER
Using hot water will void warranty

TIP: Remember, water makes up over 99% of all brewed coffee. For the best brewing results, always use good quality, filtered water.

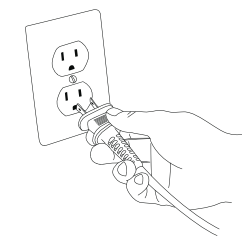
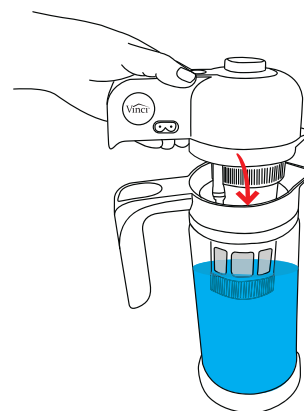
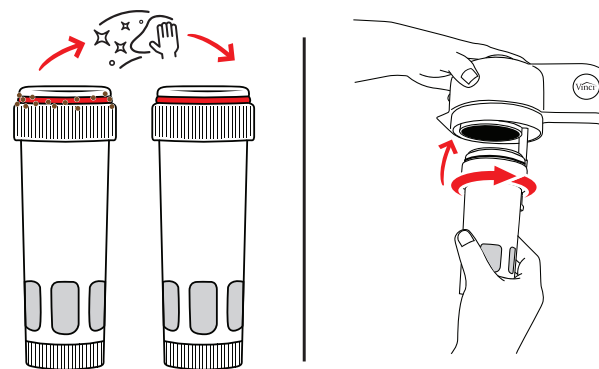
2. If not already in place, attach the Filter Basket Bottom Cap to the Filter Basket by turning clockwise until fastened tightly. Using the included 2 tablespoon scoop add approximately 7 scoops of medium to coarse grind coffee into the Filter Basket. NEVER exceed 8 scoops.

NOTE: Do not overpack or overfill the coffee. The coffee should reach almost the top of the basket, leaving about 1/2" space between the top of the grounds and top of the basket.

3. Place the Filter Basket Top Cap onto the top of the Filter Basket, pushing it until it is fully sealed.



1/2"
unfilled
space



4. Attach the Filter Basket to the Control Lid by inserting it into the bottom of the Control Lid and turning clockwise until it is secure, and no longer spins. Before tightening, make sure the Filter Basket is correctly aligned so that the threading is straight.

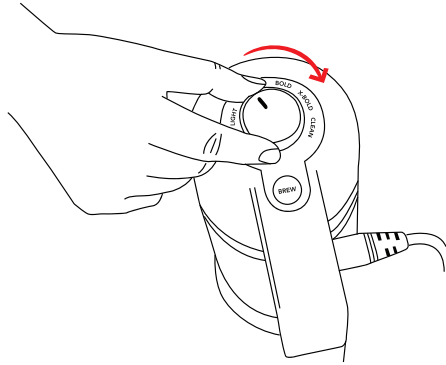
IMPORTANT: Make sure all surfaces are clean of debris especially around the O-Ring Seal. This will prevent any leaks or malfunctions during the brewing process.

5. Place the Control Lid with the attached Filter Basket on the Carafe. Make sure the Filter Basket is fully submerged in the water, and the notch on the Control Lid is aligned with the Carafe Handle.

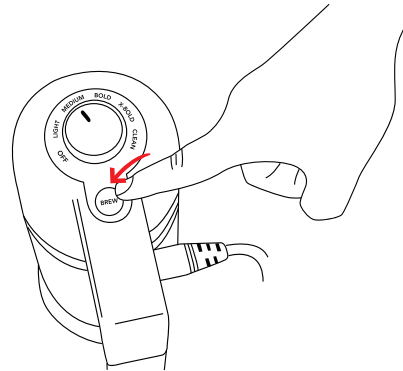
6. Attach the electrical Power Cord to the connection on Control Lid, then plug into an electrical outlet. Make sure that your Express Cold Brew is on a flat, secure surface for brewing.

IMPORTANT:

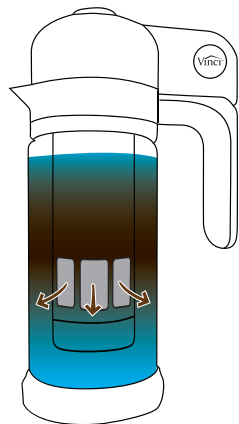
- This appliance has a polarized plug (one blade is wider than the other). To reduce the risk of electric shock, this plug is intended to fit into the appliance and outlet one way.
- If the plug does not fit into the outlet, reverse the plug, and try to re-insert the plug into the outlet.
- Do not force the plug into the outlet.



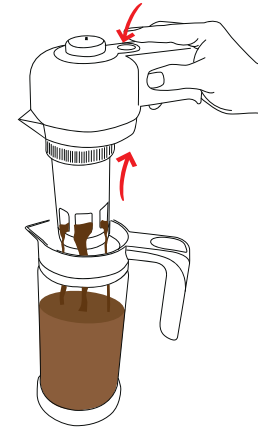
7. Rotate the Control Knob to select your desired brew-strength. (Refer to page 12)



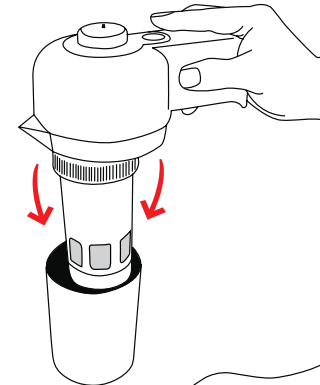
8. Press the Brew button to start the brew cycle. The Brew button is illuminated red while the brew cycle is in progress.



9. Within seconds the clear water will begin to transform into cold brew! When the brew cycle is completed, the Brew button will illuminate Blue, and there will be two short audible "brew finished" beeps. Your cold brew yield will depend on the amount of water absorbed by the grounds.



10. Upon completion of the brew cycle, partially lift the Control Lid from the Carafe leaving just the bottom portion of the Filter Basket inside the Carafe. With the Control Lid hovering over the Carafe, (but not in the cold brew), press the Brew button so the pump will start and force air through the Filter Basket expelling excess water from the coffee grounds. When no more water is visibly draining from the Filter Basket (typically about 20 seconds), press the Brew button again to stop the pump.



11. Place the Control Lid with attached Filter Basket into the Cleaning Cup. See Care and Cleaning instructions on page 17 for cleaning instructions.



12. Place the Serving Lid on the Carafe. You are now ready to serve your cold brew or store it in the refrigerator for up to 10 days.

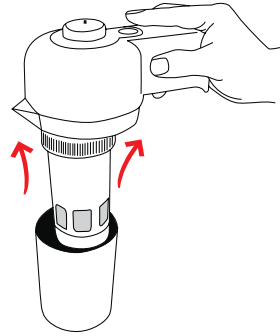
TIP: Cold brew retains its smooth, low acidic, yet bold taste when heated. Enjoy cold brew as is, in recipes, served hot, cold, or over ice.

CARE AND CLEANING OF THE FILTER BASKET

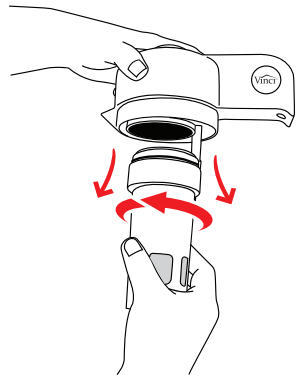
To ensure optimal performance from your Vinci Express Cold Brew, follow these Care and Cleaning instructions after every brew cycle.



Cleaning:
See it in Action!!



1. Remove the Control Lid and Filter Basket Assembly from the Cleaning Cup



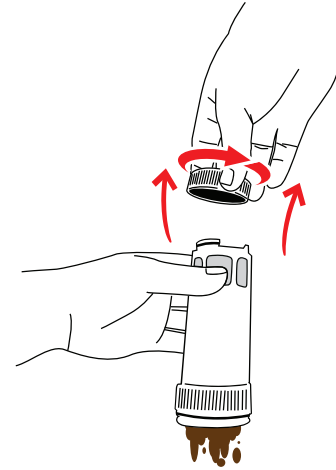
2. Remove the Filter Basket from the Control Lid by turning it counter clockwise.



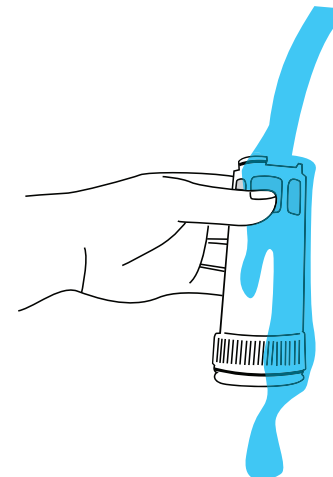
3. Remove the Filter Basket Top Cap and dispose of the spent coffee grounds.

HINT: Spent coffee grounds are great composting material.

CARE AND CLEANING OF THE FILTER BASKET



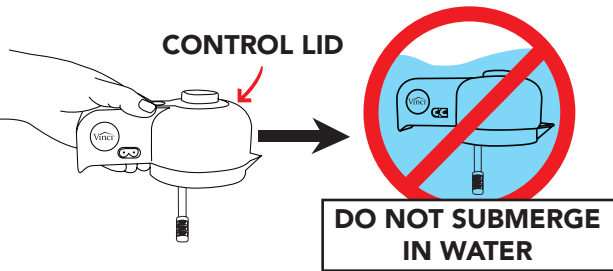
4. Remove the Filter Basket Bottom Cap by turning it counter clockwise to aid in disposing of any remaining spent grounds.



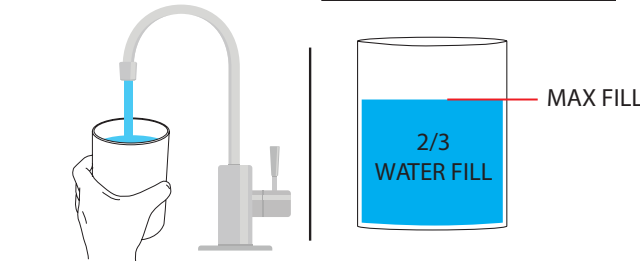
5. Rinse and wash all of the Filter Basket parts so they are clean and ready to be used for your next carafe of cold brew.

CARE AND CLEANING OF THE CONTROL LID

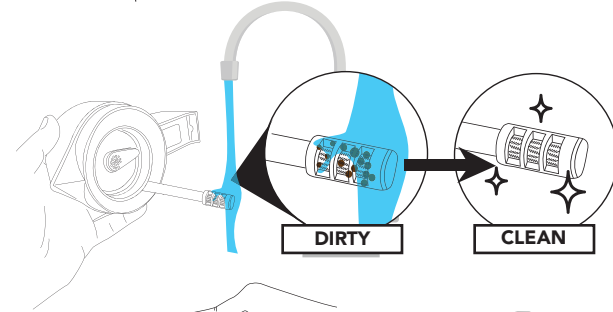
To ensure optimal performance from your Vinci Express Cold Brew, follow these Care and Cleaning instructions after every brew cycle.



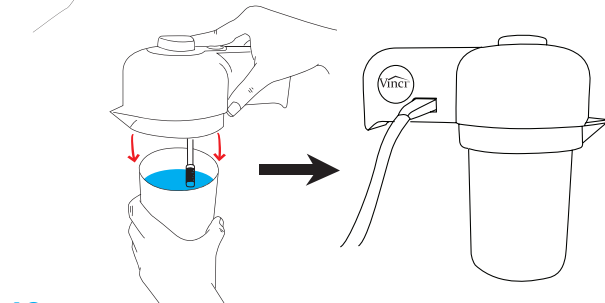
1. NEVER submerge the Control Lid in water or any other liquid. NEVER place Control Lid in a stream of water or any other liquid. Doing so will damage the Express Cold Brew, which could lead to personal injury and will void your warranty.



2. Fill the Cleaning Cup about 2/3 full with clean fresh water.

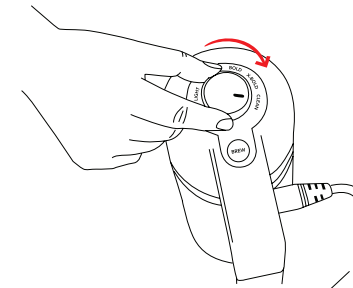


3. Inspect the bottom of the Water Pickup Tube to see if any brewing material has collected on the filter. If so, gently rinse ONLY the bottom of the Water Pickup Tube to clear any debris.

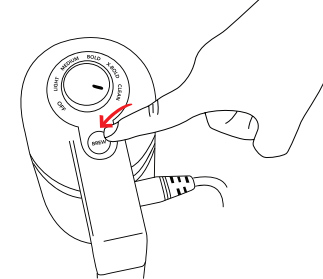


4. Place the Control Lid into the Cleaning Cup.

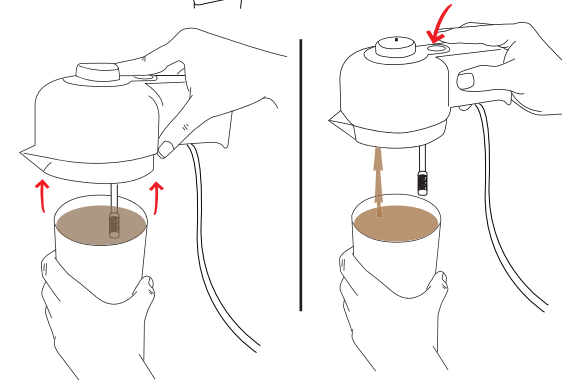
CARE AND CLEANING OF THE CONTROL LID



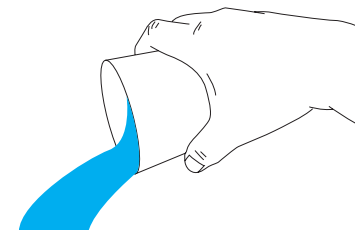
5. Rotate the Control Knob to CLEAN.



6. Press the Brew button to start the cleaning process. The fresh water from the cleaning cup will run through the pump, flushing out any remnants from the prior brew cycle.



7. After the Clean cycle is complete, raise the Control Lid until the Water Pickup Tube is no longer touching the water in the Cleaning Cup. Press the Brew button again so air runs through the pump system and evacuate any remaining water.



8. Empty any remaining water in the Cleaning Cup and rinse it clean to be ready for the next use.

TROUBLESHOOTING

PROBLEM	POSSIBLE CAUSE	SOLUTION
The beverage is weak in flavor	<ol style="list-style-type: none"> 1. The selected brew-strength was too low. 2. Not enough coffee was added to the Filter Basket. 3. The coffee grind is too fine. 4. Cold water was used. 	<ol style="list-style-type: none"> 1. Select a higher brew-strength 2. Add additional coffee to the Filter Basket without overfilling it. 3. Always use a medium to coarse grind coffee. 4. Always use room temperature water.
The beverage is strong in flavor	<ol style="list-style-type: none"> 1. The selected brew-strength was too high. 2. Too much coffee was added to the Filter Basket. 	<ol style="list-style-type: none"> 1. Select a lower brew-strength 2. Add less coffee to the Filter Basket. 3. Add water or other liquid to the completed brew to dilute the beverage to achieve your desired strength and flavor.
Excessive grounds or sediment in the beverage	<ol style="list-style-type: none"> 1. Grounds were present on the outside of the filter basket. 2. Too fine of a coffee grind was used. 	<ol style="list-style-type: none"> 1. Verify the exterior and the sealing surfaces of the Filter Basket are free from any debris before brewing. 2. Use a coarser grind coffee.
<p>The Brew button is not illuminated</p> <p>The unit will not run</p>	<ol style="list-style-type: none"> 1. The Control Knob is in the OFF position. 2. The Power Cord is not properly connected to the Control Lid. 3. The Power Cord is not properly connected to an electrical outlet. 4. The electrical outlet has no power. 	<ol style="list-style-type: none"> 1. Rotate the Control Knob clockwise to select the desired brew-strength. 2. Verify the Power Cord is fully inserted into the Control Lid. 3. Verify the Power Cord is fully inserted into the power outlet. 4. Try a different power outlet. 5. The unit may require factory service – Contact Vinci Housewares support

PROBLEM

POSSIBLE CAUSE

SOLUTION

The unit in running but no water is circulating	<ol style="list-style-type: none"> 1. The water level in the Carafe is too low. 2. The Water Pickup Tube is not installed. 3. The Water Pickup Tube is damaged or clogged. 4. The Filter Basket is overpacked with coffee. 5. The coffee grind is too fine. 	<ol style="list-style-type: none"> 1. Make sure the water level in the Carafe is at the Fill Line. 2. Verify the Water Pickup Tube is properly installed to the bottom of the Control Lid. 3. Verify the Water Pickup Tube is not clogged or damaged. 4. Do not overfill or compress the coffee in the Filter Basket. 5. Always use medium to coarse grind coffee. 6. The unit may require factory service – Contact Vinci Housewares support
Water is overflowing from the Carafe when brewing	<ol style="list-style-type: none"> 1. The water level in the Carafe was above the Fill Line 2. The Filter Basket is overpacked with coffee. 3. The Coffee Grind is too fine. 	<ol style="list-style-type: none"> 1. Do not exceed the maximum Fill Line when adding water to the Carafe. 2. Do not overfill or compress the coffee in the Filter Basket. 3. Always use medium to coarse grind coffee.
Water is leaking from the top of the Filter Basket when brewing	<ol style="list-style-type: none"> 1. The area around the O-Ring Seal of the Filter Basket has some debris. 2. The Filter Basket is loose. 3. The Filter Basket is overpacked with coffee. 4. The coffee grind is too fine. 5. The Filter Basket O-Ring Seal is damaged or missing. 	<ol style="list-style-type: none"> 1. Verify the exterior and the sealing surfaces of the Filter Basket are free from any debris before brewing . 2. Verify the Filter Basket is inserted properly to the Control Lid and that it is turned fully clockwise. 3. Do not overfill or compress the coffee in the Filter Basket. 4. Always use a medium to coarse grind coffee. 5. Contact Vinci Housewares support to order a replacement O-Ring.

If you think there may be an issue with your product, please contact customer support at 888-735-3621 or email support@vincihousewares.com

www.vincihousewares.com | 888.735.3621 | support@vincihousewares.com