

soundcore



Soundcore Life Q30

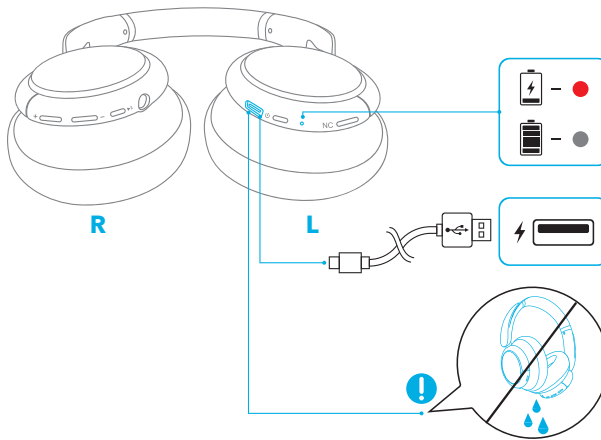
USER MANUAL

English	01	Português	92
Čeština	08	Portugues do Brasil	99
Dansk	15	Русский	106
Deutsch	22	Slovenský Jazyk	113
ελληνικά	29	Slovenski Jezik	120
Español	36	Svenska	127
Suomi	43	Türkçe	134
Français	50	日本語	141
Magyar	57	한국어	148
Italiano	64	简体中文	155
Nederlands	71	繁體中文	162
Norsk	78	لَعَرَبِيَّة	169
Język polski	85	ברית	176

Charging



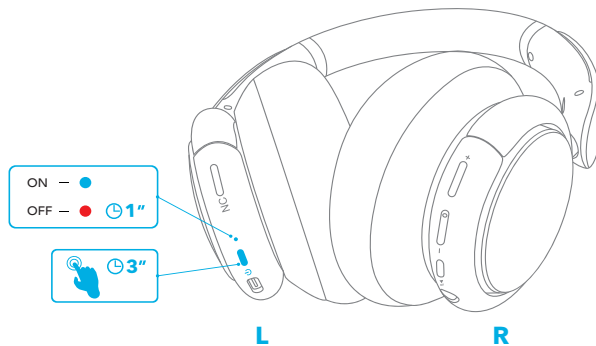
- Fully dry off the USB port before charging.
- Use the provided or certified USB-C charging cable and charger to prevent any damage.
- Do not power on your headphone while charging.



	Flashing red once every 60 seconds	Low battery
	Steady red	Being charged
	Light off	Fully charged

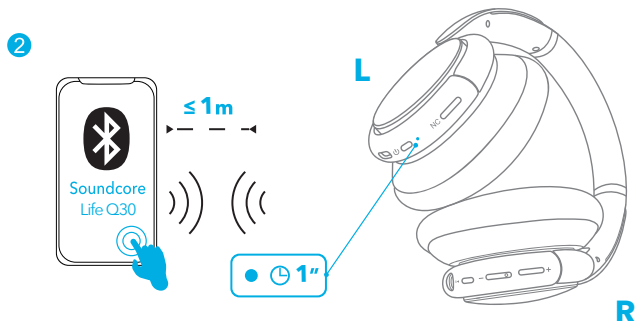
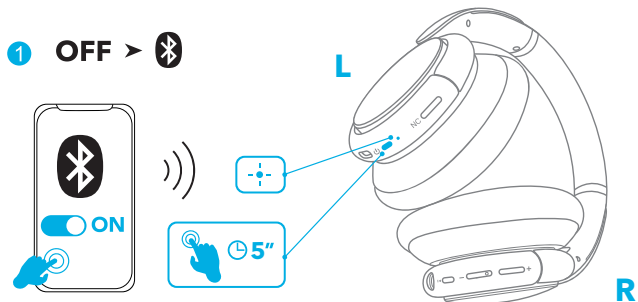
Powering On/Off



Press and hold the power button for 3 seconds to power on/off.



Bluetooth Pairing

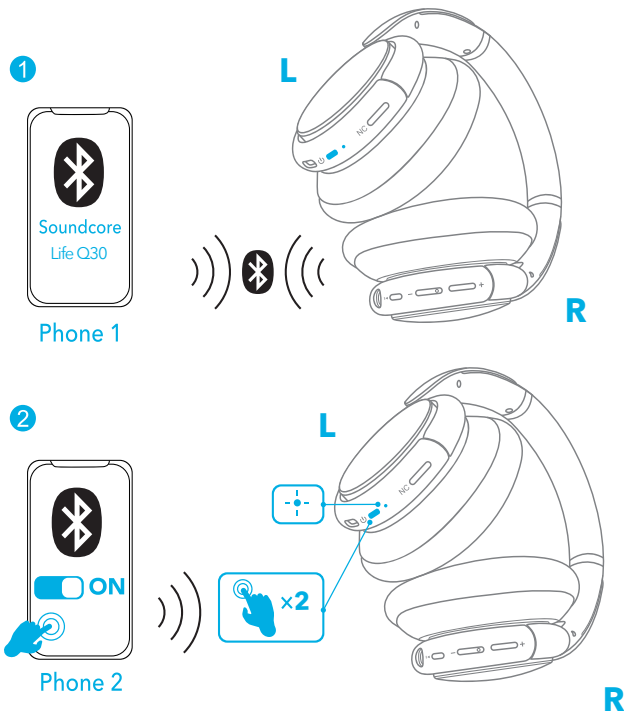
1. When powered off, press and hold the power button for 5 seconds until the LED flashes blue to enter the Bluetooth pairing mode.
2. Select "Soundcore Life Q30" on your device's Bluetooth list to connect.



	Flashing blue	Bluetooth pairing
	Steady blue	Bluetooth connected

Pairing with another device

When successfully connected with the first device, press twice the power button to pair up with another device.



- Your Soundcore headphone can only play music on one mobile device at a time. To play from another connected device, pause the currently active device first.
- Each time you power on your Soundcore headphone, it will automatically connect to your last successfully connected device if available within the Bluetooth range.

Button Controls

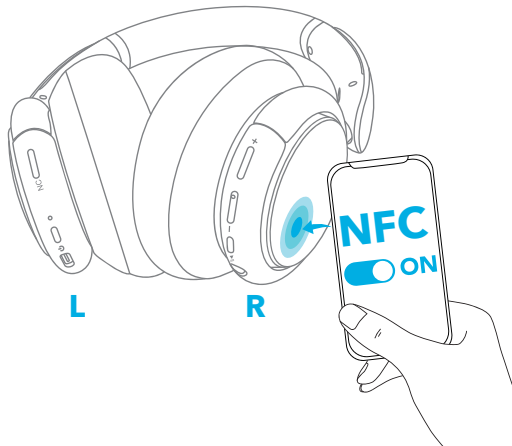
🎵		
Play/Pause	⏻	Press
Next track	+	Press and hold for 1 second
Previous track	-	Press and hold for 1 second
Volume up/down	+/-	Press

📞		
Answer/End a call	⏻	Press
Put the current call on hold and answer a new incoming call		
Reject a call	⏻	Press and hold for 1 second
Switch between held call and active call		
🎤		
Activate Siri or other voice assistant software	⏻	Press and hold for 1 second

NFC Mode

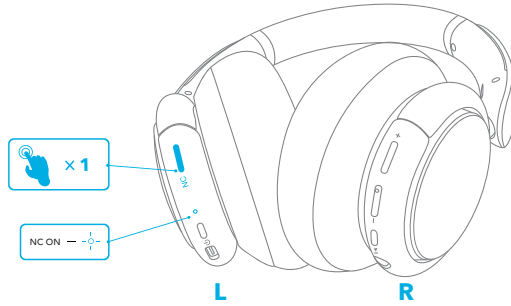
Near Field Communication (NFC) is a technology that enables short-range wireless communication between various NFC compatible devices, such as mobile phones and IC tags. If your Bluetooth device supports NFC, you can connect it with your headphone easily.

1. Enable the NFC feature on your Bluetooth device (iOS devices excluded).
2. Tap the right panel of your headphones with the back of your Bluetooth device.



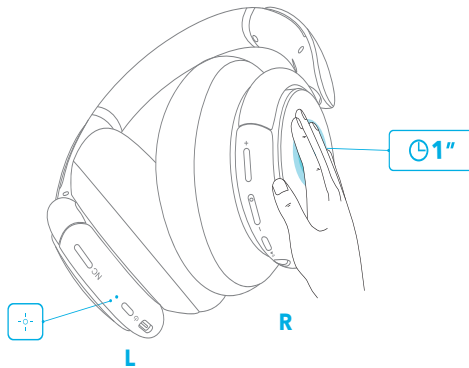
Noise Cancellation Mode

To reduce ambient noise, turn on the active noise cancellation mode by pressing the NC button. Press the NC button again to turn off.



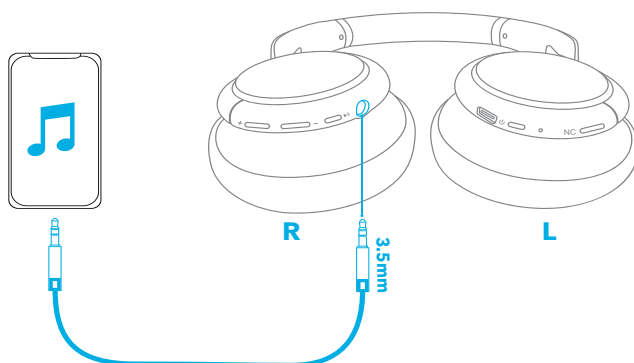
Transparency Mode

To stay aware of your surroundings by allowing ambient sounds in, touch the right panel for 1 second to activate the transparency mode.



AUX Mode

Play audio on an external device by plugging in a 3.5mm AUX cable.



- When the headphone is out of battery, you can still listen to music but ANC mode is unavailable.

Soundcore App

Download the Soundcore App for an enhanced experience with your headphones.

EQ settings: There are more than 20 EQ settings you can choose from in the App to optimize your experience while enjoying different music genres.

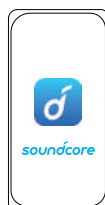
Noise cancellation: Choose an active noise cancellation mode to reduce ambient noise according to your surroundings.

- **Transport:** Targets low-end frequencies like engine and road noise for peaceful journeys and commutes.
- **Outdoor:** Reduces ambient sounds in cities for less distractions.
- **Indoor:** Reduces voices and mid-frequency noise from coffee shops and other inside spaces.

Transparency: Stay aware of your surroundings by allowing ambient sounds in.

White noise soundscape: Tailor your own white noise soundscape when you need to rest.

Firmware update: You will be informed once the new version of firmware is detected when you connect the headphones with the App.



Google Play and the Google Play logo are trademarks of Google Inc.

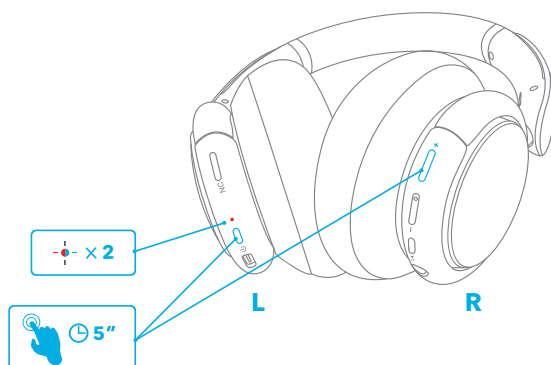


Apple and the Apple logo are trademarks of Apple Inc.

Reset

You might need to reset your headphone if you experience any connectivity problems or function issues.

Press and hold the power button and volume up button simultaneously for 5 seconds until the LED indicator flashes blue and red alternately twice.



Specifications

Specifications are subject to change without notice.

Input	5 V $\overline{\text{DC}}$ 0.65 A
Charging time	2 hours
Playtime (with ANC mode turned on)	40 hours
Playtime (with ANC mode turned off)	60 hours
Driver size	40 mm \times 2
Frequency response	20 Hz - 20 kHz
Impedance	16 Ω
Bluetooth version	V5.0
Bluetooth range	15 m / 49.5 ft